

TACO[®]

MARINE

LED LIGHTS

AWARD-WINNING ILLUMINATION

Impact-resistant, waterproof for non-submersion and tested to meet the highest standards put in place by the United States Coast Guard.



PROVIDING INNOVATION & SAFETY

Introducing two new manual and electric mounts designed for raising and lowering an anchor and stern light from the safety of the deck. The Grand Slam 900 allows boaters to lift and descend the Anchor & Stern Light by simply extending and rotating the Type-316L stainless-steel crank handle, which locks flush into the base. The Grand Slam 950 is the electric equivalent of the GS-900 and allows boaters to lift and descend the Anchor & Stern Light with a simple push of a button. No manual crank action required!

GRAND SLAM 900 ANCHOR & STERN LIGHT

- Ideal for powered vessels 39' and under
- Certified for USCG-required 2 NM
- Light runs on 12 volts and consists of four 3-watt LED Cree chips driven by two Mean Well drivers
- Light and shaft included
- Mounts through hardtops up to 2" thick



GRAND SLAM 950 ELECTRIC ANCHOR & STERN LIGHT

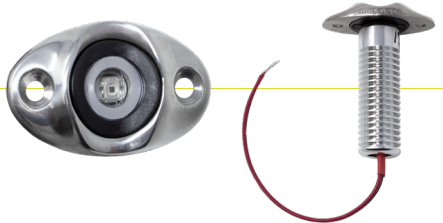
- Ideal for powered vessels 39' and under
- Certified for USCG-required 2 NM
- Lights runs on 12 volts and consists of four 3-watt LED Cree chips driven by two Mean Well drivers
- Uses only 1-amp of power when moving up or down
- Light and shaft included
- Easy surface mount installation for all top thicknesses



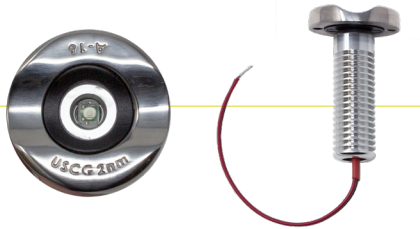
SURFACE MOUNT LED NAVIGATION LIGHTS

We've also added a new line of Surface Mount LED Navigation Light Sets – low-profile lights mounted in a heavy-gauge stainless-steel cover designed to fit on flat surfaces and ideal for powered vessels 40' and under.

F38-6610D
1-3/4"

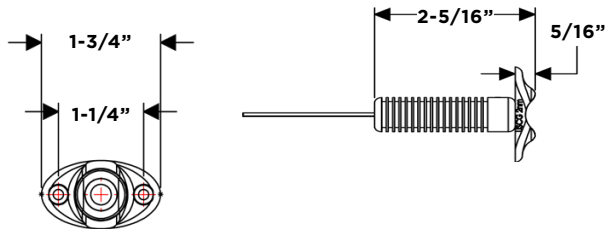


F38-6610G
1-3/8"

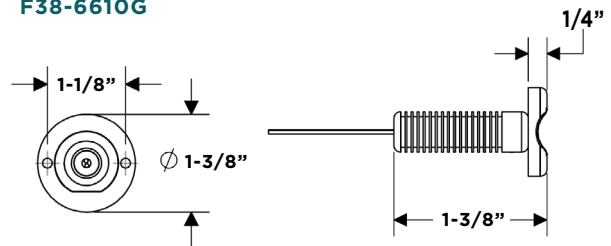


- ▶ Certified for USCG-required 2 NM
- ▶ Low-voltage 12 to 24VDC and water-resistant IP68 rating
- ▶ Provides 112.5° of unobstructed views with less glare
- ▶ Low draw of only .6 amps that compares to a 10-watt incandescent light
- ▶ Anodized cylindrical aluminum heat sink for maximum heat dissipation

F38-6610D

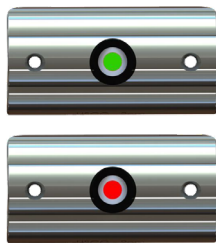


F38-6610G



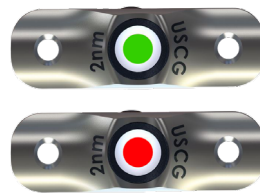
RUB RAIL MOUNTED LED NAVIGATION LIGHTS

Meets ABYC/USCG requirements for both sail and powerboat designation



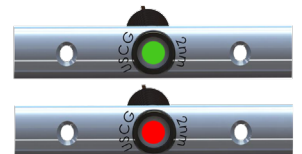
F38-6602
3-3/8"

- ▶ Low-voltage 12-14VDC and water-resistant IP68 rating
- ▶ Provides a 112.5° unobstructed view with less glare
- ▶ Anodized aluminum heat sink for maximum heat dissipation
- ▶ LED lights are mounted in a heavy-gauged polished stainless-steel joiner cover



F38-6800D
2-1/2"

- ▶ Designed to fit the popular 3/4" insert profiles
- ▶ Low-voltage 12-14VDC and water-resistant IP68 rating
- ▶ Provides a 112.5° unobstructed view with less glare
- ▶ Special order item sold in pairs
- ▶ LED lights are mounted in a heavy-gauged polished stainless-steel joiner cover

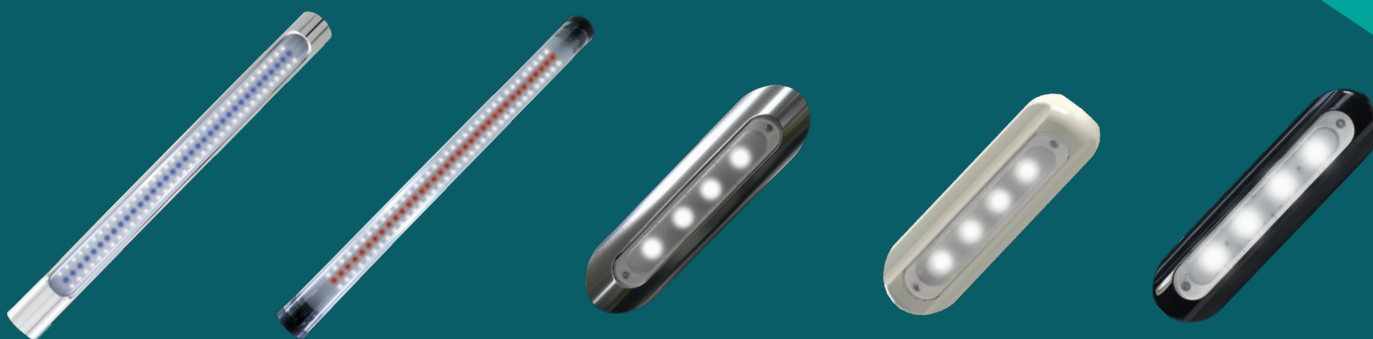


F38-6810B
4"

- ▶ Designed to fit the popular 3/4" insert profiles
- ▶ Provides a 112.5° unobstructed view with less glare
- ▶ Low-voltage 12-14VDC and water-resistant IP68 rating
- ▶ LED lights are mounted in a heavy-gauged polished stainless-steel joiner cover

LED DECK LIGHTS

We manufacture a variety of powerful, long-lasting LED Deck Lights for flat and pipe mount applications that are impact resistant, IP67-waterproof for non-submersion and low draw. Find all these products and more on our website tacomarine.com.



TACO[®]
MARINE

Explore our complete line of LED Lights
and more on our website.

TACOMARINE.COM

[f](#) [@](#) [@tacomarine](#) [@](#) [@taco_marine](#) [#TACOLED](#)